

NOTES

- 1.) THE TYPES, LOCATION, SIZES AND/OR DEPTHS OF EXISTING UNDERGROUND UTILITIES AS SHOWN ON THIS SURVEY WERE OBTAINED IN PART FROM FIELD AND OFFICE COMPILATION, THE LATTER BEING A SOURCE OF VARYING RELIABILITY. A REASONABLE EFFORT HAS BEEN MADE TO LOCATE AND DELINEATE ALL KNOWN UTILITIES. HOWEVER, THE SURVEYOR CAN ASSUME NO RESPONSIBILITY FOR THE COMPLETENESS OR ACCURACY OF THE DELINEATION OF SUCH UNDERGROUND UTILITIES NOR FOR THE EXISTENCE OF OTHER BURIED OBJECTS OR UTILITIES WHICH MAY BE ENCOUNTERED BUT WHICH ARE NOT SHOWN ON THIS MAP.
- 2.) THE UNDERGROUND SEWER AND WATER LINE SHOWN HEREON WAS PROVIDED BY TECTONICS DESIGN GROUP, BY FOUND UTILITIES IN THE FIELD AND GRAPHICALLY DRAWN FOR GENERAL LOCATION ONLY.
- 3.) RECORD OF SURVEY FOR TYBO PROPERTY & INVESTMENT LIMITED, RECORDED AS FILE NO. 103870, DATED MAY 2, 2006, STOREY COUNTY RECORDER.

BASIS OF BEARINGS

THE BASIS OF BEARINGS OF THIS SURVEY IS N68°20'45" E, BEING THE GRID BEARING BETWEEN NGS STA. N339 AND STA. X146, THE FOLLOWING NEVADA COORDINATE SYSTEM, WEST ZONE VALUES ARE BASED ON THE NORTH AMERICAN DATUM OF 1983/94 HARN EXTENSION:

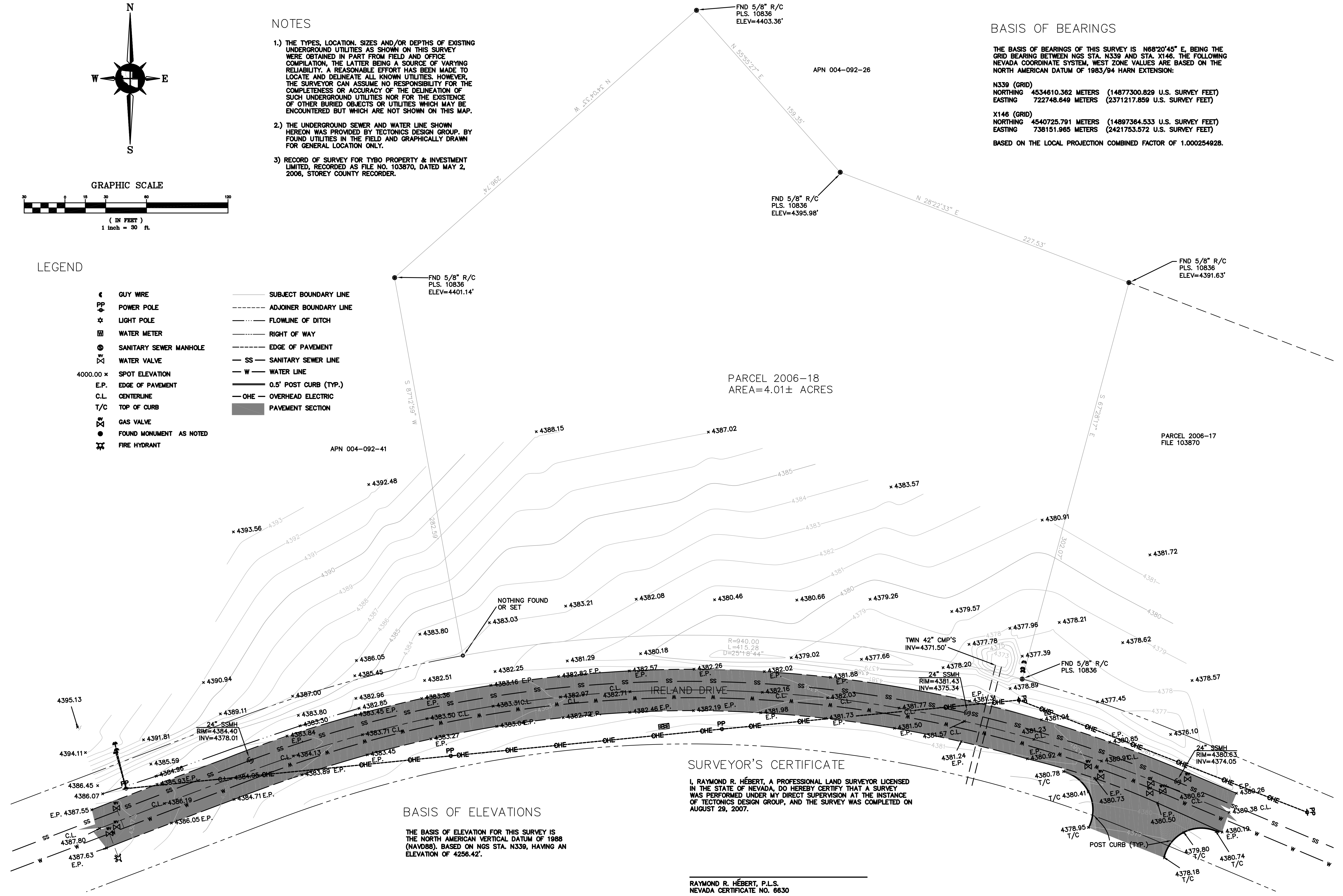
N339 (GRID)
 NORTHING 4534610.362 METERS (14877300.829 U.S. SURVEY FEET)
 EASTING 722748.649 METERS (2371217.859 U.S. SURVEY FEET)

X146 (GRID)
 NORTHING 4540725.791 METERS (14897364.533 U.S. SURVEY FEET)
 EASTING 738151.965 METERS (2421753.572 U.S. SURVEY FEET)

BASED ON THE LOCAL PROJECTION COMBINED FACTOR OF 1.000254928.

LEGEND

- ☉ GUY WIRE
- ⊕ POWER POLE
- ⊛ LIGHT POLE
- ⊞ WATER METER
- ⊙ SANITARY SEWER MANHOLE
- ⊗ WATER VALVE
- 4000.00 x SPOT ELEVATION
- E.P. EDGE OF PAVEMENT
- C.L. CENTERLINE
- T/C TOP OF CURB
- ⊗ GAS VALVE
- FOUND MONUMENT AS NOTED
- ⊕ FIRE HYDRANT
- SUBJECT BOUNDARY LINE
- - - ADJOINER BOUNDARY LINE
- ⋯ FLOWLINE OF DITCH
- ⋯ RIGHT OF WAY
- - - EDGE OF PAVEMENT
- SS - SANITARY SEWER LINE
- W - WATER LINE
- - - 0.5' POST CURB (TYP.)
- OHE - OVERHEAD ELECTRIC
- ▨ PAVEMENT SECTION



BASIS OF ELEVATIONS

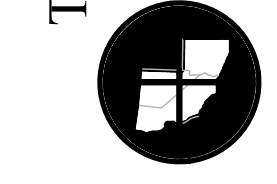
THE BASIS OF ELEVATION FOR THIS SURVEY IS THE NORTH AMERICAN VERTICAL DATUM OF 1988 (NAVD88). BASED ON NGS STA. N339, HAVING AN ELEVATION OF 4256.42'.

SURVEYOR'S CERTIFICATE

I, RAYMOND R. HÉBERT, A PROFESSIONAL LAND SURVEYOR LICENSED IN THE STATE OF NEVADA, DO HEREBY CERTIFY THAT A SURVEY WAS PERFORMED UNDER MY DIRECT SUPERVISION AT THE INSTANCE OF TECTONICS DESIGN GROUP, AND THE SURVEY WAS COMPLETED ON AUGUST 29, 2007.

RAYMOND R. HÉBERT, P.L.S.
 NEVADA CERTIFICATE NO. 6630

TRI STATE SURVEYING, LTD
 1925 E. PRATER WAY
 SPARKS, NEVADA 89434
 (775) 358-9491 • FAX 358-3664



BENCHMARK	DESIGNED BY	CHECKED BY	APPROVED BY	RRH	NO.	DATE	MARK	REVISIONS
	AMIS	RRH	RRH		6630			
	DATE 8/30/07	DATE 8/30/07						

TOPOGRAPHIC SURVEY FOR TECTONICS DESIGN GROUP
 BEING A PORTION OF THE SE 1/4 OF SECTION 34, TOWNSHIP 20 NORTH, RANGE 22 EAST, M.D.M. NEVADA
 STOREY COUNTY

JOB NO. 07368.01.RC
DATE 8/30/07
SHEET 1
OF 1